



CABLE CLIPS & CLAMPS

CH / RSC
Snap In Cable Hanger

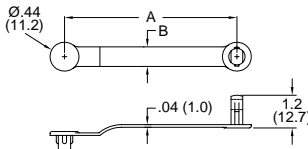


Figure 1

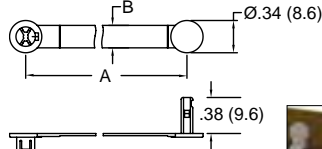


Figure 2



Specifications:

- Material: See table
- Color: See table

Features:

- Gathers and routes cables & wires
- Push mount design allows for fast installation

Item No.		Figure	A Ref		B		Max Holding Ø		Material	Bulk Pack Qty.
			In	mm	In	mm	In	mm		
CH-1-01	CH-1-01BK	1	1.750	44.5	0.297	7.5	0.375	9.5	UL94 V-2 Nylon 6/6	1000
CH-2-01	CH-2-01BK	1	2.625	66.7	0.297	7.5	0.625	15.9	UL94 V-2 Nylon 6/6	1000
CH-3-01	CH-3-01BK	1	3.750	95.3	0.297	7.5	1.000	25.4	UL94 V-2 Nylon 6/6	1000
CH-1-10	CH-1-10BK	1	1.750	44.5	0.297	7.5	0.375	9.5	UL94 HB Polypropylene	1000
CH-2-10	CH-2-10BK	1	2.625	66.7	0.297	7.5	0.625	15.9	UL94 HB Polypropylene	1000
CH-3-10	CH-3-10BK	1	3.750	95.3	0.297	7.5	1.000	25.4	UL94 HB Polypropylene	1000
—	RSC-3-01	2	1.100	28.0	0.160	4.0	0.218	5.6	UL94 V-2 Nylon 6/6	1000
—	RSC-4-01	2	1.300	33.0	0.240	6.0	0.250	6.4	UL94 V-2 Nylon 6/6	1000
—	RSC-6-01	2	1.690	43.0	0.240	6.0	0.375	9.5	UL94 V-2 Nylon 6/6	1000
—	RSC-9-01	2	2.480	63.0	0.240	6.0	0.625	15.9	UL94 V-2 Nylon 6/6	1000

V
Screw Mount Component Clip

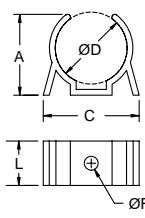
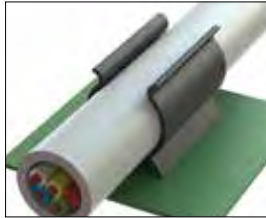


Figure 1

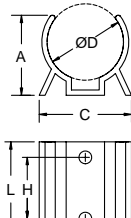


Figure 2

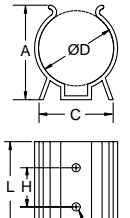


Figure 3

Specifications:

- Material: UL94 V-0 PVC Color: Black

Features:

- Legs prevent shifting and tipping
- Mounts securely with screws or rivets
- Holds parts firmly

Item No.	D Holding Ø		F Hole Ø Ref.		A Ref.		C Ref.		H Ref.		L		Figure	Bulk Pack Qty.
	In	mm	In	mm	In	mm	In	mm	In	mm	In	mm		
V-1000	0.25	6.4	.094	2.4	0.30	7.5	0.50	12.7	Single Hole In Center	0.50	12.7	1	1000	
V-1001	0.31	7.9	.094	2.4	0.36	9.1	0.50	12.7	Single Hole In Center	0.50	12.7	1	1000	
V-1002	0.38	9.5	.094	2.4	0.41	10.3	0.50	12.7	Single Hole In Center	0.50	12.7	1	1000	
V-1003	0.44	11.1	.094	2.4	0.45	11.5	0.52	13.1	Single Hole In Center	0.50	12.7	1	1000	
V-1004	0.50	12.7	.094	2.4	0.50	12.7	0.66	16.7	Single Hole In Center	0.50	12.7	1	1000	
V-1005	0.56	14.3	.094	2.4	0.61	15.5	0.72	18.3	Single Hole In Center	0.50	12.7	1	1000	
V-1006	0.63	15.9	.094	2.4	0.63	15.9	0.83	21.0	Single Hole In Center	0.50	12.7	1	1000	
V-1007	0.69	17.6	.156	4.0	0.63	15.9	0.84	21.0	Single Hole In Center	0.50	12.7	1	1000	
V-1008	0.75	19.7	.156	4.0	0.78	19.8	0.89	22.6	Single Hole In Center	0.50	12.7	1	100	
V-1009	0.88	22.2	.156	4.0	0.91	23.0	1.08	27.4	Single Hole In Center	0.50	12.7	1	100	
V-1010	1.00	25.4	.156	4.0	0.98	25.0	1.13	28.6	.75 19.1	1.13	28.5	2	100	
V-1011	1.38	34.9	.156	4.0	1.34	34.1	1.25	31.8	.75 19.1	1.13	28.5	2	100	
V-1024	1.50	38.1	.156	4.0	1.81	46.0	1.42	36.1	.75 19.1	1.75	44.5	3	100	
V-1028	1.75	44.5	.156	4.0	1.92	48.8	1.50	38.1	.75 19.1	1.75	44.5	3	100	
V-1030	2.25 - 2.75	57.1 - 69.9	.156	4.0	2.44	61.9	2.61	66.3	.75 19.1	1.50	38.1	3	100	

VM
Screw Mount Component Clip

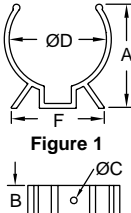


Figure 1

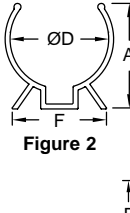


Figure 2

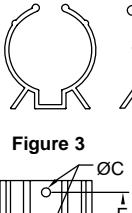


Figure 3

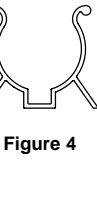


Figure 4

Specifications:

- Material: UL94 V-2 Nylon 6/6
- Color: Black

Features:

- Smooth edges protect components from wear and abrasion
- Legs prevent shifting and tipping
- Mounts securely with screws or rivets

Item No.	D Holding Ø		C Hole Ø		A Ref.		B		E		F Ref.		Figure	Bulk Pack Qty.
	In	mm	In	mm	In	mm	In	mm	In	mm	In	mm		
VM-1002	3/8	9.5	0.11	2.8	0.44	11.2	0.50	12.7	Single Hole in Center	0.54	13.7	1	100	
VM-1004	1/2	12.7	0.11	2.8	0.52	13.2	0.50	12.7	Single Hole in Center	0.75	19.1	1	100	
VM-1007	11/16	17.5	0.15	3.8	0.78	19.8	0.50	12.7	Single Hole in Center	0.82	20.8	1	100	
VM-1008	3/4	19.1	0.15	3.8	0.97	24.6	0.50	12.7	Single Hole in Center	0.98	24.9	1	100	
VM-1010	1	25.4	0.15	3.8	1.03	26.1	1.12	28.4	.750	19.1	1.25	31.8	2	100
VM-1011	1-3/8	34.9	0.15	3.8	1.51	38.4	1.16	29.5	.750	19.1	1.37	34.8	2	100
VM-1024	1-1/2	38.1	0.15	3.8	1.67	42.4	1.70	43.2	.750	19.1	1.50	38.1	3	100
VM-1030	2-1/4	57.2	0.15	3.8	2.50	63.5	1.52	38.6	.750	19.1	3.00	76.2	4	100